



# OPERATIONS+ PERFORMANCE

# OPTIMISER: DYNAMIC POSITIONING

Deliver enhanced insights that help drive operational improvement, including settings adjustments, tolerances and operator training.

## How can we help?

As part of the **Operations+** offering, our Energy Optimiser solution unlock greater efficiency in operations performance and energy efficiency

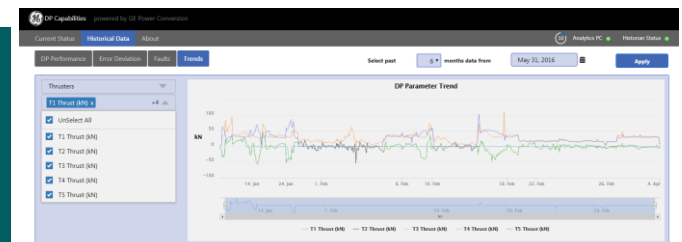
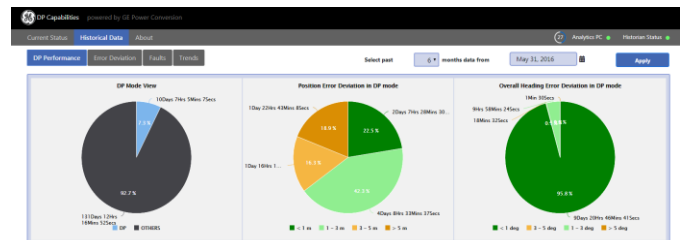
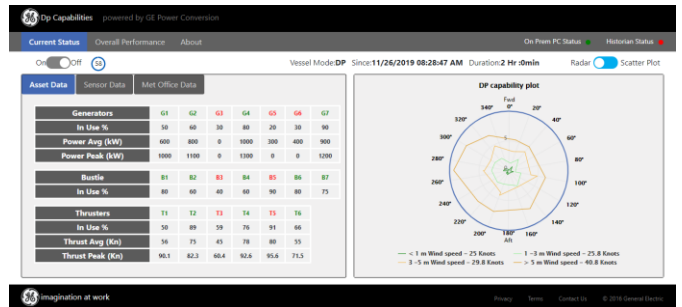
Our solution is designed to capture and display real time performance and accuracy of your Dynamic Positioning (DP) System

## What is the Value of the Solution?

- Improve Situational awareness, operations reliability, and generate reports with transparency
- Provide up-to-date insights of the performance and capability of the vessel's DP system
- Visualize failures that take place during DP operations and drill down into the details
- Best practices sharing for vessel energy efficiency or across fleet and defined mitigation actions.
- Vessels comparison within the same fleet.
- Compact and cost-effective solution

## Compatibility with Energy Optimiser and Dynamic Positioning systems

- Energy & Performance (DP) Optimiser are combined into a single app and designed to work seamlessly on vessels with GE's own Vessel Control and Dynamic Positioning Systems, or as a standalone product with any 3rd party vessel control/automation system.



## HIGHLIGHTS

configuration that supports in reducing fuel consumption, help reducing emissions and drive highly efficient engine operations



## Performance Optimiser: Dynamic Positioning Features

- Situational awareness
- Reliability - 24x7 RT monitoring that flags failures on sensors, position, thrusters and power systems
- Availability - allows to generate custom reports
- Can be used as a tool to train crews
- Position error deviation of vessels in dynamic positioning mode
- Real time risk assessments by comparing current date to previous operations
- Allows to drill-down to details for dates, impacts and trends.
- Sensor fault details (PME, Wind and Gyro Failures)
- Real time visibility of the status of your Battery (Online/Offline/ Charging/ Discharging)
- Fleet View

Cloud or On-Prem solutions available

## CONTACT US

[Contactus.powerconversion@ge.com](mailto:Contactus.powerconversion@ge.com)

## HIGHLIGHTS

### SAFE AND FLEXIBLE

- Open interface with third party systems using OPC-UA
- Easy to use On Prem and Cloud dashboards
- Achilles level 1 & IEC62443 – 4- 1 Security Certified (through VCB v.2.7+)

## General Architecture

Solution available on-prem (edge) PC which performs the analytics and provides insights into the optimum power system configuration. Visor Connect Box (VCB) is used to safely and securely collect data from the vessel's DP or automation and control system. Both the on-prem analytics PC and VCB are packaged in one unit.

